



Florida Department of Transportation

RON DESANTIS
GOVERNOR

2198 Edison Avenue
Jacksonville, Florida 32204-2730

KEVIN J. THIBAUT, P.E.
SECRETARY

For Immediate Release

March 1, 2021

Contact: Bianca Speights

(904) 360-5471 | Bianca.Speights@dot.state.fl.us

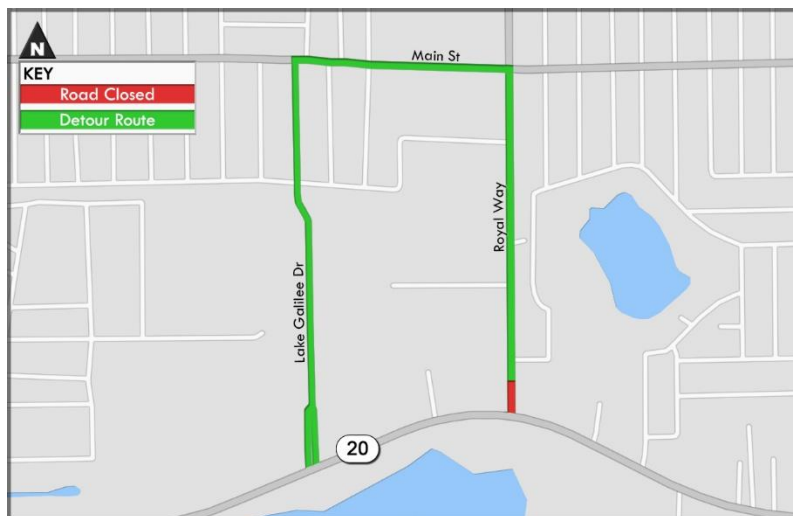
Royal Way to Close Temporarily at State Road 20 for Reconstruction Work

HAWTHORNE, Fla. – As part of the widening improvements on State Road 20 from the Putnam County line to SW 56th Avenue, Royal Way will be temporarily closed to traffic at State Road 20 Tuesday, March 2 through early May, weather and schedule permitting. The closure is necessary to safely complete roadway reconstruction work.

Drivers will detour via Lake Galilee Drive and Main Street (map below).

Anderson Columbia Co. Inc. is estimated to complete the \$49 million improvements by late 2022, weather and schedule permitting.

Stay informed about lane closures and roadwork in your area by following FDOT District 2 at [@MyFDOT_NEFL](https://twitter.com/MyFDOT_NEFL) on Twitter or at [MyFDOTNEFL](https://www.facebook.com/MyFDOTNEFL) on Facebook.



###

Improve Safety, Enhance Mobility, Inspire Innovation
NFLRoads.com | [@MyFDOT_NEFL](https://twitter.com/MyFDOT_NEFL) | [Facebook.com/MyFDOTNEFL](https://www.facebook.com/MyFDOTNEFL)

The Florida Department of Transportation's mission is to provide a safe transportation system that ensures the mobility of people and goods, enhances economic prosperity, and preserves the quality of the state's environment and communities. The department is committed to building a transportation system that not only fits the current needs of Florida's residents and visitors, but also enhances mobility throughout the state to accommodate its consistent and rapid growth. The unique nature of the Sunshine State and its year-round warm climate provides numerous opportunities to achieve the department's mission through multiple transportation modes including highways/streets, air, rail, sea, spaceports, transit, and the ever-expanding deployment of bicycle & pedestrian facilities.